

Radiological Monitoring Programs in Kuantan and Gebeng

Atomic Energy Licensing Board

Batu 24 Jalan Dengkil

43800 Dengkil, Selangor, Malaysia.

Tel: 603-8922 5888 Fax: 603-8922 3685

[Http://www.aelb.gov.my](http://www.aelb.gov.my)

23 February 2012

Sampling Location - "On-Site".

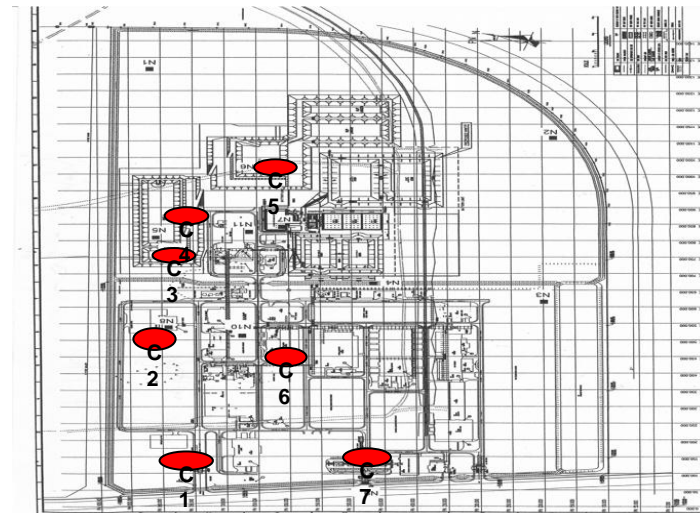
C4 – Neutralization Underflow (NUF)



C5 – Water Leach Purification (WLP)



C3 – Flue-Gas Desulphurization (FGD)



C6 – Production Storage



C2 – Operation Control Room



C7 – Administration Building



C1 – Guard house



Sampling location "Off-Site" - 1km.



Sampling location "Off-Site" - 5km.

R5-1
Klinik Desa Sungai Ular

R5-2 SK Balok Baru

R5-3
Kuaters TLDM

LYNAS

Jalan Pintasan Kuantan

Jalan Perlabuhan 3

Jalan Perlabuhan 2

Jalan Perlabuhan 1

Jalan Perlabuhan 4

Jalan Perlabuhan 5

Jalan Perlabuhan 6

Jalan Perlabuhan 7

Jalan Perlabuhan 8

Jalan Perlabuhan 9

Jalan Perlabuhan 10

Jalan Perlabuhan 11

Jalan Perlabuhan 12

Jalan Perlabuhan 13

Jalan Perlabuhan 14

Jalan Perlabuhan 15

Jalan Perlabuhan 16

Jalan Perlabuhan 17

Jalan Perlabuhan 18

Jalan Perlabuhan 19

Jalan Perlabuhan 20

Jalan Perlabuhan 21

Jalan Perlabuhan 22

Jalan Perlabuhan 23

Jalan Perlabuhan 24

Jalan Perlabuhan 25

Jalan Perlabuhan 26

Jalan Perlabuhan 27

Jalan Perlabuhan 28

Jalan Perlabuhan 29

Jalan Perlabuhan 30

Jalan Perlabuhan 31

Jalan Perlabuhan 32

Jalan Perlabuhan 33

Jalan Perlabuhan 34

Jalan Perlabuhan 35

Jalan Perlabuhan 36

Jalan Perlabuhan 37

Jalan Perlabuhan 38

Jalan Perlabuhan 39

Jalan Perlabuhan 40

Jalan Perlabuhan 41

Jalan Perlabuhan 42

Jalan Perlabuhan 43

Jalan Perlabuhan 44

Jalan Perlabuhan 45

Jalan Perlabuhan 46

Jalan Perlabuhan 47

Jalan Perlabuhan 48

Jalan Perlabuhan 49

Jalan Perlabuhan 50

Image © 2011 GeoEye
© 2011 MapIt
© 2011 Cnes/SpotImage
Data SIO, NOAA, U.S. Navy, NGA, GEBCO

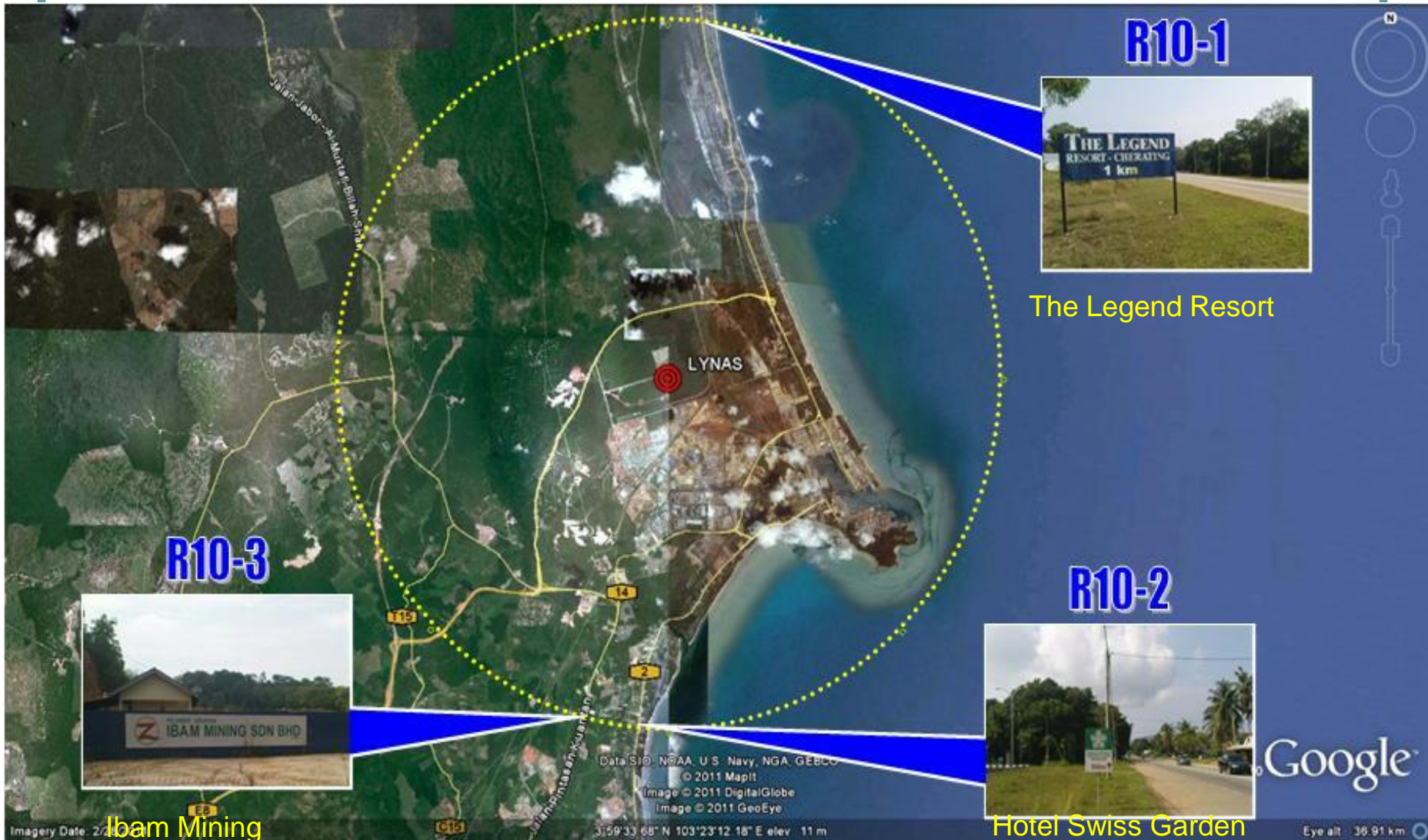
Image Date: 2/28/2011

3°56'07.245"N, 103°12'19.085"E, Elev: 10 m

Google

Eye alt: 18.08 km

Sampling location "Off-Site" -10km



Sampling location “Off-Site” -20km



Masjid Chendor

R20-1



SMK Sultan Abu Bakar

R20-2



Kg. Padang Perdana

R20-3

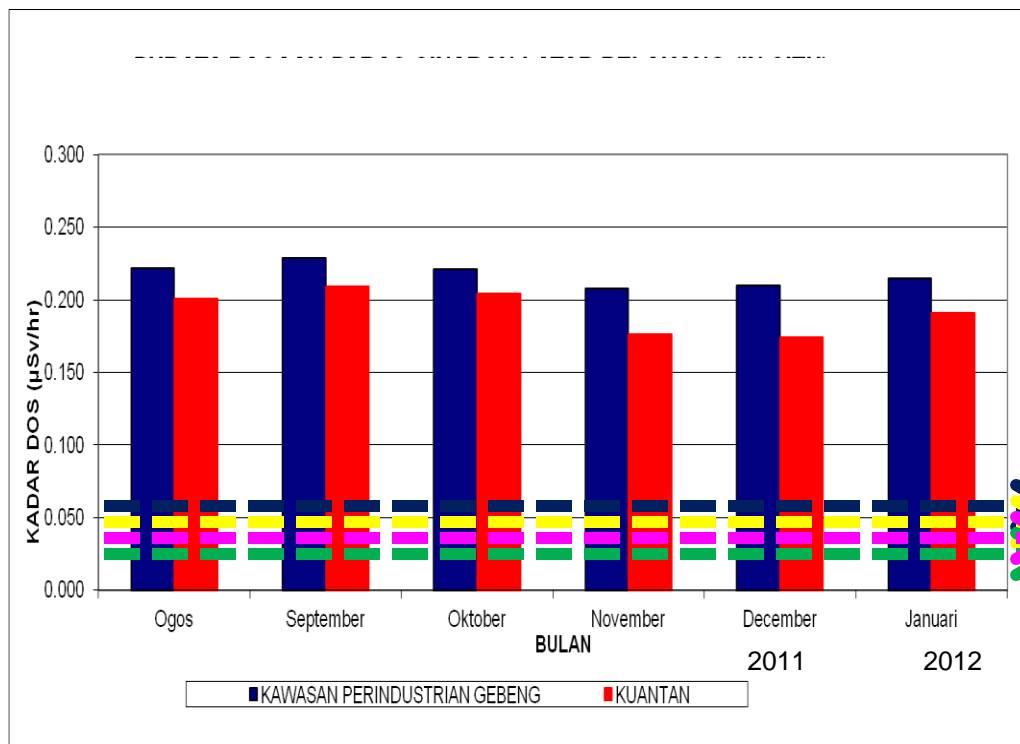
LYNAS

©2010 Google

Sampling location - transportation route (Kuantan Port to LAMP)



Background Reading – Gebeng & Kuantan Aug 2011- Jan 2012



*Malaysia= 0.051 µSv/j
Thailand = 0.043 µSv/j
Filipina/Indonesia =0.031 µSv/j
China = 0.035 µSv/j

* Rujukan : United Nation (UNSCEAR 2000)

The radiation measured did not exceed the limit for a member of the public

Environmental Radiological Monitoring System (ERMS)

2.Chuping

0.0370 $\mu\text{Sv/h}$
Feb 20 2012 8:47:08:000AM

3.Kudat

0.0310 $\mu\text{Sv/h}$
Oct 13 2011 9:32:28:000AM

7.Lahat

0.221 $\mu\text{Sv/h}$
Feb 20, 2012

6.Kuantan

0.1070 $\mu\text{Sv/h}$
Feb 11 2012 4:44:50:000AM

4.Sri Aman

0.0420 $\mu\text{Sv/h}$
Oct 13 2011 9:31:28:000AM

1.Batu Berendam

0.0440 $\mu\text{Sv/h}$
Feb 20 2012 8:47:56:000AM

0.1670 $\mu\text{Sv/h}$
Dec 6 2011 5:54:14:000PM

5.Senai

Min: 0.0310-0.221 $\mu\text{Sv/h}$

The radiation levels measured do not exceed the limit for a member of the public

Summary

The result of radiological monitoring for 2011 till February 2012 shows that the average external dose rate in Gebeng and Kuantan is four times higher than the background reading that has been reported in UNSCEAR 2000 for Malaysia. Nevertheless, it is well below the acceptable limit for a member of the public.

**Ref: United Nations (UNSCEAR 2000)*

TERIMA KASIH

NEXT WEEK.....

ASIAN RARE EARTH